



**2024 SEASON**

# Program Guide



**The Arboretum grounds are open to visitors sunrise to sunset year-round.  
Admission is \$5, free for members.**

**The Visitor Center and Plant Sales are open seasonally,  
May 25 through October 14, 2024.**

**Polly Hill Arboretum, 795 State Road, West Tisbury  
[pollyhillarboretum.org](http://pollyhillarboretum.org) | 508-693-9426 | [info@pollyhillarboretum.org](mailto:info@pollyhillarboretum.org)**



**Membership  
Opportunities**



**Registration  
& Calendar**

*Above: Rhododendron specimens bloom west of Polly's Play Pen*  
*Front Cover: Rhododendron 'Hal Bruce'*  
*Back Cover: Clematis 'Guernsey Cream' flowering on a stonewall*





## **A Martha's Vineyard Public Garden: We invite you to come explore and be inspired by the Polly Hill Arboretum**

Formally established as a public garden in 1998, the Arboretum is a result of horticultural experimentation and a vision of conservation and preservation. In 1957 renowned horticulturist Polly Hill began a quest to create a garden with year-round interest with plants well-suited for the challenges of the Island's tough climate. After decades of gardening, she realized the time had come to plan for the future of the maturing landscape.

Her research and meticulous record-keeping caught the interest of conservation philanthropist Dr. David H. Smith. A retired medical doctor, he recognized the accomplishments of her research and also saw the importance of preserving the historic farm, stonewalls and surrounding woodlands that otherwise might be slated for development. He purchased the property, and a series of actions were taken to preserve it in perpetuity as a non-profit botanical institution known as the Polly Hill Arboretum.

Since its incorporation in 1998, the Arboretum's mission has focused on education, plant conservation, the care and preservation of our historic landscape and buildings. The Arboretum continues to be a horticultural and ecological resource and inspiration today. Whether exploring the grounds, taking a tour, or participating in a program, visitors always have many opportunities to learn from the Polly Hill Arboretum.

The Arboretum has grown in size, staff, infrastructure and visitation. Public programs are made possible through membership, admission, donations and grants.

### **WAYS TO SUPPORT PHA:**

**Membership:** Become a supporting member at [pollyhillarboretum.org/get-involved/membership/](http://pollyhillarboretum.org/get-involved/membership/) and receive free admission and discounts on programs and merchandise.

**Donate** at [pollyhillarboretum.org/get-involved/donate/](http://pollyhillarboretum.org/get-involved/donate/)

**Volunteer:** All aspects of the Arboretum are supported by volunteers. To learn more about volunteering, email [info@pollyhillarboretum.org](mailto:info@pollyhillarboretum.org).

### **TO REGISTER FOR PROGRAMS:**

Visit [pollyhillarboretum.org/education/calendar/](http://pollyhillarboretum.org/education/calendar/).

*Programs may be added throughout the season; please check the website calendar for updates.*



# Lecture Series



## Native Plants with a Twist: Unexpected Excitement from our Native Flora

*In Collaboration with the Martha's Vineyard Garden Club.  
Sponsored by The Nature Conservancy and Dukes Conservation District.*

**Thursday, June 20, 5:30-6:30pm**

Native plants don't have to be boring. Join Horticulture and Plant Development Manager **Adam Wheeler** of Broken Arrow Nursery for this informative and educational lecture that explores the unique and exceptional side of our native flora. Adam will present his current favorite native trees and shrubs for general garden use including design considerations, cultural requirements, and other critical details. A special emphasis will be given toward unusual variation

and unexpected use. Both novice and experts alike will find value in this talk.

**\$10 (\$5 for PHA & M.V. Garden Club members). Please pre-register.**

.....



## Vanilla So Black

**Wednesday, July 17, 5:30-6:30pm**

**Derek Haynes** is a dedicated botanist and plant scientist who follows in the footsteps of notable Black researchers like George Washington Carver and Percy Julian. As The Chocolate Botanist on Instagram, Derek has built a thriving community of nearly 50K like-minded individuals who appreciate his extensive knowledge and infectious enthusiasm. In this lecture, join Derek and learn the ethnobotany of Vanilla and its intersection with Black History.

*Part of a collaborative series with the Oak Bluffs Public Library.*

**\$20 (\$10 for PHA members). Please pre-register.**

.....

## ANNUAL LISINA & FRANK W. HOCH MEMORIAL LECTURE

### Cultivating the Passion for Native Plants

*Sponsored by The Nature Conservancy and Dukes Conservation District.*

**Wednesday, July 24, 5:30-6:30pm**

**Jared Barnes, Ph.D.**, started gardening when he was five years old, and since then, he has enthusiastically pursued how to best cultivate plants and cultivate minds. In this inspiring lecture, Dr. Jared Barnes will share how he educates students about native plants at Stephen F. Austin State University, his explorations in the wild looking for native plants, and his success growing them in east Texas.

**\$10 (\$5 for PHA members). Please pre-register.**



**All lectures are held in the open-air Far Barn, accessible from the Visitor entrance parking lot. Programs are listed at [pollyhillarboretum.org/education/calendar/](https://pollyhillarboretum.org/education/calendar/). Please pre-register for all lectures.**



## A Brief History of NYBG's School of Professional Horticulture

**Wednesday, August 7, 5:30-6:30pm**

For over 90 years, the School of Professional Horticulture at the New York Botanical Garden has educated and trained motivated individuals to become horticulturists of the highest caliber. The call to educate and train horticulturists is growing louder, particularly as climate change reshapes the field. This transformation brings forth new environmental challenges and opportunities, underscoring the need to recruit and develop horticulturists equipped with the knowledge and skills to address

global demands. Discover the rich history of one of the nation's premier horticulture programs with **Richard Smith**, Director of NYBG's School of Professional Horticulture.

*Part of a collaborative series with the Oak Bluffs Public Library.*

**\$20 (\$10 for PHA members). Please pre-register.**

## ANNUAL DAVID H. SMITH MEMORIAL LECTURE

### Plant Exploration: The Passion and the Insanity

*Sponsored by The Nature Conservancy  
and Dukes Conservation District.*

**Wednesday, August 14, 5:30-6:30pm**

Bringing plants into cultivation can serve many purposes, including the benefits of increasing urban landscape biodiversity as well as preserving the genetics of species of conservation concern in safe sites. Plant exploration has many ethical, legal, natural, and physical challenges to navigate, but ultimately is a satisfying endeavor that seems to be taken on only by a small collaborative group of the most passionate plant nerds. Join **Adam Black**, Director of Horticulture and Plant Conservation at Bartlett Research Labs and Arboretum, as he chronicles the various exhilarating adventures, unexpected complications, and comical situations he has encountered in both far-flung regions of the world as well as the surprisingly under-explored regions of the United States.

**\$10 (\$5 for PHA members). Please pre-register.**



ADAM BLACK

### Creative Seasonal Succulent Displays for Temperate Gardens

**Wednesday August 28  
5:30-6:30pm**

Even in the temperate Northern climate it is possible to consider succulents as attractive outdoor additions to the home or formal garden. In this lecture, **Harnek Singh** will speak about his many years of creative design as a Horticulturist at Wave Hill in Riverdale, NY where he is the head of the Cactus/Succulent Greenhouse. He will share the details of what he looks for in plants before choosing them for seasonal succulent displays, including how leaf texture, color, maintenance needs, and propagation ease are carefully considered in these succulents and their companion plants.

*Part of a collaborative series with the Oak Bluffs Public Library.*

**\$20 (\$10 for PHA members). Please pre-register.**



HARNEK SINGH



## Underground Arborist

Wednesday, September 11, 5:30-6:30pm

**Colah B Tawkin** is a visionary leader, skillfully combining her passion for planting with her creativity and charisma on the mic. As the mastermind behind the 'Black in the Garden' podcast and founder of the nonprofit 'Underground Arborist,' she's on a mission to diversify plant-related industries as she amplifies the green aspect of Black culture. In its first years, the podcast gained top ratings and a global audience, connecting with influential guests and fostering inclusivity. Colah's wit and insights make horticulture accessible, while her role as a mother and former trucker enriches her unique perspective.

*Part of a collaborative series with the Oak Bluffs Public Library.*

**\$20 (\$10 for PHA members). Please pre-register.**

## Living in Wôpanâak Territory

Wednesday, September 18, 5:30-6:30pm

**David Two Arrows** and **Saskia Vanderhoop** are the founders of Sassafras Earth Education, an Indigenous nonprofit in Aquinnah, and have been mentoring youth and adults for 20 years. David is an Aquinnah Wampanoag elder born and raised traditionally on Noêpe. David and Saskia Vanderhoop will be addressing the following topics: Acknowledging Indigenous territories and peoples as a first step to reconciliation; a truthful representation of history with a focus on the Wôpanâak People of Nôepe; strategies of repair and activism. David and Saskia may be joined by other Wôpanâak guest speakers that lift up Indigenous voices.

**\$10 (\$5 for PHA members). Please pre-register.**



## Creating the Brooklyn Bridge Park

Saturday, October 12, 3:00-5:00pm

Brooklyn Bridge Park, 1.3 miles long and more than 20 years in the making, has transformed an abandoned waterfront into a public landscape visited by 5 million people a year. Combining the perspectives of designer and horticulturalist, **Michael Van Valkenburgh** (*right*) and **Rashid Poulson** will discuss the planning, realization, and stewardship of the landscape with a special focus on planting design and ecology, emphasizing the continued collaboration between the firm and park operations team. The conversation marks the arrival *Brooklyn Bridge Park*, a visual biography of the landscape by Michael Van Valkenburgh Associates released by the Monacelli Press in early 2024.

**\$20 (\$10 for PHA members). Please pre-register.**



ALEX MACLEAN



# Workshops & Classes

## Balance in Nature

**Tuesday mornings, April through October, 9-10am**

Deepen your appreciation of nature by joining in a mindful hour of gentle movements drawn from the Chi Kung tradition of Tai Chi with **Kanta Lipsky**. Set among the Arboretum's diverse collection of trees, this practice will strengthen our connection to the earth and increase our body's ability to maintain good balance.

**\$15 (\$10 for PHA members).**  
**Please pre-register.**



## Propagation: Summer Cuttings

**Saturday, June 29, 10am-12pm**

Learn how to propagate herbaceous and softwood plants via summer cuttings with **PHA Plant Propagator Brittany Clark**. Participants will be able to create their own cuttings and learn aftercare techniques. Check the website for more details.

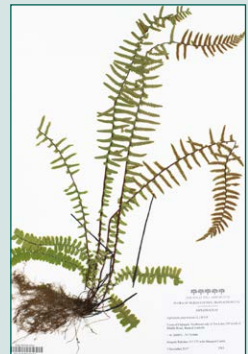
**\$40 (\$20 for PHA members).**  
**Please pre-register.**

## Make Your Own Herbarium Voucher

**Two-part Two Part Workshop: Thursdays July 11 & 18, 5-7pm**

An herbarium is a collection of dried plant specimens used for scientific study. Join **Curator/Assistant Director Emily Ellingson** for a hands-on journey exploring the art and science of herbaria. In this two-session workshop, participants will learn about the history and importance of herbaria, and then collect, press, and mount their own herbarium vouchers to take home for scientific study and appreciation.

**\$60 (\$40 for PHA members).** Please pre-register.



**Programs are listed at [pollyhillarboretum.org/education/calendar/](https://pollyhillarboretum.org/education/calendar/).**  
**Please pre-register.**

# Tours

## Hidden Treasures of the Arboretum: A Tour of Unique and Unknown Collections

**Saturday, June 22, 10am-12pm**

The Arboretum is known for its living collections of trees and shrubs, but beyond the beauty of the grounds, are special collections used for research. These include the herbarium of dried pressed plants and the Stephen A. Sponberg Library, with its rare monographs and exceptional botanical illustrations. There are remarkable collections that tell the story of the site's agricultural history, as well as quirky and unique collections obtained over the last 25 years by PHA staff. Join **Executive Director Tim Boland** on a special behind-the-scenes tour of this remarkable assemblage of artifacts and ephemera that are sure to surprise and delight.

**\$30 (\$20 for PHA members). Please pre-register.**



## Exploring PHA's Meadows

**Friday, September 20, 10am-12pm**

Join PHA Research Associates **Gregory Palermo** and **Margaret Curtin** as they guide participants through the Arboretum's meadows. Learn how to identify the many native species that coexist in this important habitat. More details to follow on our website.

**\$20 (\$10 for PHA members).  
Please pre-register.**

## Botanical Spotlight Tours

**2nd & 4th Friday of each month  
June through September, 10-11am**

Learn more about the Arboretum and its plant collections on guided walks led by PHA staff. These specialized tours are designed to offer an in-depth experience, each focusing on a different aspect of the Arboretum.

**Included with \$5 admission  
(free for PHA members).  
Please meet at the Visitor Center.**



**Please see specific tour for registration requirements.**





### Arboretum Tours

**Tuesdays & Thursdays, 9-10am & 10-11am, June through August**

Learn about the history, people and plants that make Polly Hill Arboretum a special place on a garden tours led by a volunteer guide.

**Included with \$5 admission (free for PHA members).**

**Please meet at the Visitor Center.**

### Autumn Walks

**Saturday, October 12, 10-11am**

**Saturday, November 9, 10-11am**

As the busy summer season comes to a close, the Arboretum still offers much to see. Join our staff as they guide you through the changing foliage, autumn blooms, and unique seeds in our collections.

**Included with \$5 admission (free for PHA members).**

**Please meet at the Visitor Center.**



# Family Programs & Activities

## Family Friendly Mushroom Adventure

**Friday, July 19, 10:30am to 12pm**

Join mushroom enthusiast, educator, and author **Melany Kahn** for an accessible, all ages, mushroom meander followed by an interactive fungi ID session. Families will be invited to touch, smell, and learn to identify a variety of fascinating fungi. Melany will also offer a cooking demo to bring out that umami flavor and crispy texture inherent in wild and cultivated fungi. A copy of Melany's first children's book, *Mason Goes Mushrooming*, will be included in the program price. This program is open to all ages. Children are encouraged to accompany an adult for no extra cost.

**\$30 per adult (\$20 per PHA member),  
accompanying children are free  
(includes a copy of *Mason Goes Mushrooming*).  
Please pre-register.**



---

## Family Book Series

**Thursdays July 11 through August 15, 10-11am**

Enjoy summer with your family while listening to a nature-based children's book read by a PHA education volunteer. A simple walk or activity related to the book will follow. Books will be selected for children 3 to 8 years old, although all ages are welcome. Want to extend your Arboretum adventure? Pack a picnic to enjoy after story time in the picnic grove by the Visitor Center.

**Free. Registration not required.**





## Family Explorer Backpacks (self-guided)

**Available to borrow in the Visitor Center  
9:30am-4pm**

The Arboretum is the perfect place for families to discover nature together, and our Family Explorer Backpacks will help make this experience more informative and fun. These self-guided educational backpacks, available in the Visitor Center, contain an Arboretum map, field guides, magnifying glasses, sketch pads, and other materials to engage the entire family in nature studies during their visit.

**Free on loan during your visit.  
Available in the Visitor Center.**



---

## Woodland Gnome Hunt

**Map available in the Visitor Center, 9:30am-4pm**

Woodland gnomes are hiding along PHA's Native Tree Trail. Follow the clues written by an expert gnome spotter to find 10 woodland gnomes throughout the Native Tree Trail. Gnome maps are also available at both the West Field and Picnic Grove entrances to the Native Tree Trail.

**Free with \$5 admission.**





# On Demand Programs

PHA is happy to announce the launch of **On Demand Programs**. To increase the accessibility of our educational services, these virtual lectures are newly available to view at your convenience. Webinars cover a range of topics, including plant exploration, native flora, and much more.

**\$20 (\$10 for PHA members).**



## **The Redbuds: Superb Small Flowering Trees for Home Landscapes**

Join **Executive Director Tim Boland** as he highlights the cultivation history and diversity of redbud trees. Tim will discuss the talented horticulturists and plant breeders who have helped create many new varieties available to gardeners today.



## **The Yellow Magnolias: Origin and Ornament**

Join **Executive Director Tim Boland** as he presents the origins and cultivation history of the stunning yellow magnolias. Once rare, there are now more varieties available. Which ones are the best for your garden?



## **The Hunt for the Elusive Mountain Camellia**

Since 2007, **Executive Director Tim Boland** has participated in numerous trips to locate, map, and collect seeds for the Arboretum collections. PHA's *Stewartia* collection is nationally accredited by the Plant Collection network. Staff continue to discover new populations and the techniques to grow them through trial and error. Join Tim as he shares the story of the hunt for these beautiful rare trees and the many people who have helped along the way.

**Webinars may be purchased and viewed at  
[pollyhillarboretum.org/education/on-demand-programs/](https://pollyhillarboretum.org/education/on-demand-programs/).**

# Volunteer Opportunities

## Grounds Volunteer Open Days

**First Thursday of each month  
9am-12pm, May through October**

Curious about becoming a PHA grounds volunteer? Come to a **Volunteer Open Day** to try it out. This opportunity offers an easy-going, fun environment focused on camaraderie and learning about plant care with staff and other volunteers.

\*\*\*\*\*

## Visitor Center Volunteers

Welcome and educate visitors, sell membership and merchandise.

\*\*\*\*\*

## Youth Education Volunteers

Lead elementary school groups through the Arboretum.

For more details or general volunteer information, email [info@pollyhillarboretum.org](mailto:info@pollyhillarboretum.org).





# Plants for Sale at PHA

## Perennials, Shrubs & Trees

**Saturday, May 25 through  
Monday, October 14, 9:30am-4pm  
at the Visitor Center**

PHA sells plants during Visitor Center hours (9:30am-4pm daily, with exceptions). Choose from plants propagated from the Arboretum grounds, grown from seed collected on expeditions or selected as Island-appropriate by our staff. We offer a wide variety of unique trees, shrubs, perennials and Island native species.



---

## Online Native Plant Plug Sale

**Spring Sale: May 31 through July 5**

**Fall Sale: September 6 through  
October 9**

Want to fill meadow, woodland or wildflower areas with beautiful native plants? The Arboretum offers Island native plants sold as plugs. Small but strong, these plugs will establish quickly in your garden, providing important food and habitat to pollinators and local fauna. Visit [polly-hill-arboretum.square.site/](https://polly-hill-arboretum.square.site/) for more information and to place your order. Pick up your plugs at the Visitor Center.





## 2024 Events at a Glance

Please see program details or website for registration and pricing information

### RECURRING & SELF GUIDED

**Balance in Nature (Tai Chi), Kanta Lipsky**  
Tuesdays, April through October, 9-10am

**Family Book Series**  
Thursdays, July 11 through August 15, 10-11am

**Staff Led Botanical Spotlight Tours**  
Second & Fourth Friday of the month  
June 14 through September 27, 10-11am

**Docent Led Arboretum Tours**  
Tuesdays & Thursdays  
June through August, 9-10am & 10-11am

**Plants for Sale at Visitor Center**  
Daily, May 25 through October 14, 9:30am-4pm

**Native Plant Plugs for Sale Online**  
Daily, May 31 through July 5, 9:30am-4pm

**Native Plant Plugs for Sale Online**  
Daily, September 6 through October 9, 9:30am-4pm

**Borrow a Family Explorer Backpack**  
Daily, Saturday  
May 25 through October 14, 9:30am-4pm

**Gnome Hunt along the Native Tree Trail**  
Daily, Sunrise-sunset, year-round

**On Demand Plant Webinars**  
Daily

**Grounds Volunteer Open Days**  
First Thursday of the month  
May through October, 9am-12pm

### INDIVIDUAL PROGRAMS

**Lecture: Native Plants with a Twist**  
*Adam Wheeler*  
Thursday, June 20, 5:30-6:30pm

**Tour: Hidden Treasures of the Arboretum**  
*Tim Boland*  
Saturday, June 22, 10am-12pm

**Workshop: Propagation: Summer Cuttings**  
*Brittany Clark*  
Saturday, June 29, 10am-12pm

### INDIVIDUAL PROGRAMS CONTINUED

**Workshop: Make Your Own Herbarium Voucher**  
*Emily Ellingson*  
Thursdays July 11 & 18, 5pm-7pm

**Lecture: Vanilla So Black**  
*Derek Haynes*  
Wednesday, July 17, 5:30-6:30pm

**Family Program/Tour:**  
**Family Friendly Mushroom Adventure**  
Friday, July 19, 10:30am to 12pm

**Lecture: Cultivating the Passion for Native Plants**  
*Jared Barnes, Ph.D.*  
Wednesday, July 24, 5:30-6:30pm

**Lecture: A Brief History of NYBG's School of Professional Horticulture**  
*Richard Smith*  
Wednesday, August 7, 5:30-6:30pm

**Lecture: Plant Exploration:  
The Passion and the Insanity**  
*Adam Black*  
Wednesday, August 14  
5:30-6:30pm

**Lecture: Creative Seasonal Succulent Displays  
for Temperate Gardens**  
*Hamek Singh*  
Wednesday August 28, 5:30-6:30pm

**Lecture: Underground Arborist**  
*Colah B Tawkin*  
Wednesday, September 11 5:30-6:30pm

**Lecture: Living in Wôpanâak Territory**  
*David Two Arrows and Saskia Vanderhoop*  
Wednesday, September 18 5:30-6:30pm

**Tour: Exploring PHA's Meadows**  
*Gregory Palermo and Margaret Curtin*  
Friday, September 20 10am-12pm

**Staff Led Autumn Walk Tour**  
Saturday, October 12 10-11am

**Lecture: Creating the Brooklyn Bridge Park**  
*Michael Van Valkenburgh and Rashid Poulson*  
Saturday, October 12 3-5pm

**Staff Led Autumn Walk Tour**  
Saturday, November 9 10-11am



795 State Road, West Tisbury  
pollyhillarboretum.org | 508-693-9426  
info@pollyhillarboretum.org



THE

**POLLY HILL**  
A R B O R E T U M

P.O. Box 561, West Tisbury MA 02575

## **2024 SEASON** **Program** **Guide**

**A Martha's Vineyard  
Public Garden:  
We invite you to  
come explore and  
be inspired!**