



Visitor Information

The Polly Hill Arboretum grounds are open sunrise to sunset every day of the year.

The Visitor Center is open 9:30am-4pm Memorial Day weekend to Columbus Day.

The Visitor Center is wheelchair accessible.

Admission is \$5 for non-members, and free for members and children under 12.

Membership

Members receive free Arboretum admission, Visitor Center merchandise discounts, discounts on classes and lectures, our *Meristems* newsletter, reciprocal admission to other gardens, via the American Horticulture Society, discounts at local nurseries, and more!

Visit our website for more info, or to sign up for membership.

809 State Road, West Tisbury, MA
508.693.9426

pollyhillarboretum.org

Instagram & Facebook:
@pollyhillarboretum
Twitter: @pollyhillarb

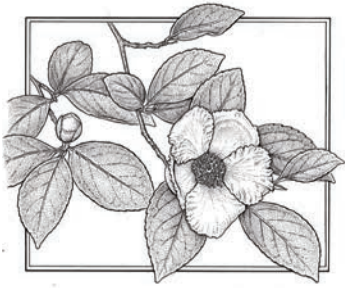


Program Guide

2019 Lecture Series

We thank our sponsors Bartlett Tree Experts, Donaroma's Nursery and Landscape Services, The Dukes Soil Conservation District, Heather Gardens, and Middletown Nursery/Oakleaf Landscape.

All lectures will be held in the Far Barn.



Drawn to Plants: The Art and Science of Botany

Wednesday, June 26, 5:30pm. Sponsored by Heather Gardens

Horticulture, scientific research, and art appreciation are connected by the portrayal of the beauty and diversity of plants. Historical and contemporary botanical art defines and delineates species and leads to an in-depth appreciation of the world of plants. Herbaria and public gardens provide resources that enhance the accuracy and artistic merit of the art. Botanical artist **Bobbi Angell** will discuss the relationship between art and science, highlighting her work as intertwined with a history of artists associated with the New York Botanical Garden and other institutions. **\$10 (\$5 for PHA members)**

Stewartia illustration (upper left) by Bobbi Angell (pictured left)



ANNUAL LISINA & FRANK W. HOCH LECTURE

Climate Change and the Survival of the Rare Plants of New England

Wednesday, July 17, 5:30pm. Sponsored by Middletown Nursery/Oakleaf Landscape and the Dukes Soil Conservation District

Climate change is already altering the behavior of plants in New England. Recently retired conservation director for the Native Plant Trust (formerly the New England Wild Flower Society) **Bill Brumback** will discuss how climate change is expected to affect the habitats and plants of New England during this century, with special emphasis on our rare plant species. Six general actions for conserving rare species will be discussed. **\$10 (\$5 for PHA members)**



Bill Brumback

Seasons in the Flower Garden at Wave Hill

Wednesday, July 24, 5:30pm

Join horticulturist **Harnek Singh** for a photographic tour of the Flower Garden at Wave Hill, a private estate turned public garden located along the Hudson River in the Bronx. Harnek will speak about how he selects plants to cultivate for the Flower Garden, how he edits self-sowing plants, and how flower shape, leaf texture, and color are carefully considered for an optimal display. **\$10 (\$5 for PHA members)**



Harnek Singh



Photo courtesy of Paul Goldstein

Offshore Entomology: Bees, Moths, and the Hidden Diversity of Vineyard Pollinators

Wednesday, July 31, 7:30pm. Sponsored by the Dukes Soil Conservation District

Join us for a lecture by **Paul Goldstein**, research entomologist with the USDA Systematic Entomology Laboratory in Washington, DC, where he is curator in the Lepidoptera (moth) collection at the Smithsonian. This presentation will showcase some of the highlights of 30 years of work devoted to the Island's insects, and the unique diversity of its native bees, moths, and other pollinators.

Featuring vivid images of these insects and their Island habitats, Dr. Goldstein will describe the fascinating biology of some of our most unusual, colorful, and beneficial insect residents, and their importance to understanding our environment. **Free.**

ANNUAL DAVID H. SMITH MEMORIAL LECTURE

Connect to Protect for Biodiversity

Wednesday, August 14, 5:30pm. Funded by a grant from The Nature Conservancy and sponsored by the Dukes Soil Conservation District.

Jennifer Ceska, Conservation Coordinator at the State Botanical Garden of Georgia, will share the Connect to Protect philosophy and gardening methodology. All gardeners have an opportunity to help support wildlife by layering native plants into their displays, even with potted plants on a patio or cheerful mailbox gardens. Displays can also be larger like grand formal borders, looser cottage style compositions, and even pocket prairies along roadsides, driveways, and rights-of-way. Grasslands, prairies, and meadows are essential on the land or we face losing bird and insect species within our lifetimes. We garden for ourselves and for the bees, butterflies, beetles, birds, bats, and box turtles that rely upon those plants. Native species have looks and personality; they have ecological relevance; and they warrant a spot in your garden. **\$10 / \$5 for PHA members.**



Jennifer Ceska



Image courtesy of
BiodiversityWorks

The Secret Life of Snakes

Tuesday, August 20, 5:30pm

Join local wildlife biologists **Liz Olson** and **Luanne Johnson** from BiodiversityWorks, for a journey into the lives of Island black racers. Since 2016, BiodiversityWorks has been tracking black racer movements and habitat use from the Katama plains to Squibnocket ridge. Learn about the biology and behavior of our largest snake species as well as how to identify the other resident snakes. While they can't bring a black racer to the talk, Liz and Luanne will do their best to bring one or two other sssspecial guests. **\$10 / \$5 for PHA members.**

Homeland Diversity: Inviting Mother Nature Back into Our Yards

Saturday, September 7, 1pm. *Funded by a grant from The Nature Conservancy and sponsored by the Dukes Soil Conservation District.*

Too many landscapes today consist mainly of lawn and very few trees and shrubs, supporting very little wildlife.

Andy Brand, Curator of Living Collections at the Coastal Maine Botanical Garden, will discuss how we can increase biodiversity in our yards, concentrating on the importance of native plants. Butterflies, caterpillars and their specific host plants will be emphasized. To show the vast diversity of critters that can be enticed into one's yard with very little effort, Andy will share pictures of some of the thousands of species found in his garden in Hamden, Maine. **Free.**



Andy Brand



Andrew Hipp

Fifty-Six Million Years of Acorns: The Evolutionary History of the World's Oaks

Wednesday, September 11, 5:30pm. *Sponsored by Bartlett Tree Experts and the Dukes Soil Conservation District*

Oaks are one of the world's great success stories: with an estimated 450 species worldwide, they dominate in a wide range of deciduous forests, savannas, and even evergreen broadleaf forests of east Asia. They are notorious hybridizers, moving variants around so readily that one species may shape

the geographic and ecological range of another species, just through gene flow. They feed our wildlife, form homes for hundreds of gall-forming insect species, and serve as the raw material for much of human civilization. Yet until recently, the evolutionary history of the genus *Quercus*, the oaks, was poorly known. In this talk, Dr. **Andrew Hipp**, Senior Scientist and Herbarium Director at The Morton Arboretum, will present on recent and ongoing research into the evolutionary history of oaks, from their earliest known ancestors of 56 million years ago, to the present day. **\$10 / \$5 for PHA members.**

Workshops & Classes

Pre-registration is required for the following programs.
Please register at least one week in advance, by calling 508-693-9426.



Painting by Lynn Hoeft

Landscape Watercolor

6 Thursdays, 10am-12:30pm: June 6, 13, 20, August 1, 8, 15

Join artist **Lynn Hoeft** for a series of watercolor classes focusing on the sights and scenes of Polly Hill Arboretum. Take just one class, or all! This class will focus on landscape scenes, and the colors and textures of summer at the Arboretum. In case of rain, the class will meet in the Education Center, painting from photographs. No previous watercolor experience is required. Participants will need to provide their own supplies; A materials list is available. **\$50 per class (\$35 for PHA members). Space is limited. Please pre-register.**

Plant Propagation: Layering

Saturday, June 8, 9am-12pm

Did you know that you can propagate many woody plants from stems that are still attached to their parent plant? Join PHA Plant Propagator **Bridget Reed** and learn the science and techniques behind layering your favorite plants. Following a brief lecture, participants will tour the Arboretum grounds for demonstrations and discussion on how you might use this technique with different species. Each person will leave with their own air layered willow plant and the knowledge to easily propagate their favorite woody ornamentals. **\$55 (\$40 for PHA members). Space is limited. Please pre-register.**



PHA's prized leaf mold

Horticulture for the Home Gardener

Thursday, June 13, 1-3:30pm

Join PHA Grounds Manager **Ian Jochems** for a look at the basics of horticulture. The class will cover the Arboretum's compost and mulch operation, and how you can replicate it in a home garden setting. Participants will also learn about plant divisions and care, soil amendments, basic integrated pest management (IPM), and will get hands-on practice with various tools. This class will

be entirely in the field; participants should dress appropriately and bring gardening gloves. **\$35 (\$20 for PHA members). Space is limited. Please pre-register.**

Drawing from Nature

8 Fridays, 9:30am-12:30pm: June 14, 21, July 12, 19, 26, August 2, 9, 16

Join artist and tree lover **Lizzy Schule** on PHA's campus for a series of nature drawing classes. Each class will cover a different theme in landscape drawing and nature journaling. These classes will be accessible to every student, whether enrolled in an individual class or the entire series. Classes will address various concerns and techniques of the landscape artist, such as perspective, simplifying complexity, shading, and how to render light. Lizzy says "Most importantly, we will have fun, be curious, and try to capture some of our experiences and observations of nature." Students will use a combination of graphite, charcoal, inks, colored pencils, and other drawing materials. **\$55 (\$40 for PHA members). Space is limited. Please pre-register.**



Drawing by Lizzy Schule



Image via Molly Glasgow

Fruit Tree Pruning

Tuesday, June 18, 1-4pm

Join PHA Grounds Manager/Arborist **Ian Jochems** for a class covering fruit tree management and growth control techniques focusing on apples, cherries, peaches, and pears. Participants will learn how trees set bud and what type of wood produces fruit. The program will begin with a lecture at PHA in the Education Center, and move to the Grey Barn orchard for the hands-on

portion. Bring work gloves and safety glasses. The Arboretum will provide pruners, saws, loppers and ladders. **\$60 (\$45 for PHA members). Space is limited. Please pre-register.**

Capturing the Life of Plants

Thursday, June 27, 10am-4pm

Observing, dissecting, and sketching plants leads to an enhanced ability to identify, understand, and appreciate them. Visiting instructor **Bobbi Angell** is a Vermont-based botanical illustrator, who works closely with scientists from institutions like the NY Botanical Garden and Harvard's Arnold Arboretum. As an introduction to botanical art, participants in this one-day workshop will learn plant features and reproductive structures as they draw. Techniques will be taught to observe, measure and enlarge vegetative and floral details, and botanical terminology will be explained. Participants will create a portrait that depicts a woody plant species in seasonal full flower at Polly Hill Arboretum, drawn as a pencil sketch that can be colored or inked in. We will look at herbarium specimens and other species for comparison to highlight the value of accurate observation. Bring pencils and erasers – all other materials will be provided. All levels are welcome. **\$90 (\$75 for PHA members). Space is limited. Please pre-register.**



Edgeworthia illustration by Bobbi Angell

Garden Chair Workshop

Saturday, June 29, 9am-12pm

We welcome **Dan Benarcik** of Chanticleer in Wayne, PA, to give a workshop teaching participants to build their own Reitveld-style Garden Chair, just like those on the grounds at Polly Hill Arboretum. Dan explains he was drawn to the chair by its austere lines, its simplicity, the elegance of its construction, and its surprising comfort. He adds, "For nearly 20 years I have been building, refining, and enjoying this chair. Constructed by hand, it will provide years of enjoyment in your garden." In less than three hours with only a cordless drill/driver, you will construct your own Garden Chair (normally sold completed for \$345) to take home. No prior experience with either woodworking, power tools, or carpentry is necessary. **\$265 (\$250 for PHA members). Space is limited. Please pre-register.**



Photo via danbenarcik.com

NATURE PHOTOGRAPHY AT PHA

Intro to Nature Photography

Two Consecutive Evenings: Tuesday & Wednesday, September 3 & 4, 4-7pm

This immersive course, taught by visiting Boston-based photographer **Lara Woolfson**, will cover DSLR camera basics; how to use internal light meters, aperture, shutter, and lens choice; a brief history on some of the greats like Ansel Adams, Frans Lanting, David Muench; and more. We'll spend the last hour of class 1 outside for sunset to practice newly learned techniques. Class 2 will be front loaded with live shooting outside. Some light post production will be covered and we'll end with a

group critique. Attendees must own a DSLR camera, a card reader, and bring a laptop if they own one. **\$100 for two evenings. (\$85 for PHA members). Pre-registration is required.**



Lara Woolfson

Nature Photography for Smartphone Users

Thursday, September 5, 4-7pm

This class, with instructor **Lara Woolfson**, covers the basics for using your smart phone outdoors to take beautiful photographs. Topics covered will include how to adjust light, how to choose focus points, different modes for different subject matters, and how to edit photos in the phone. Includes a walking photo tour of the Arboretum to try out new skills and ask questions along the way. **\$50 (\$35 for PHA members). Space is limited. Please pre-register.**

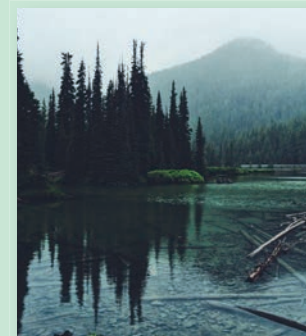


Photo courtesy of Lara Woolfson

Workshops and Classes

Tool Maintenance

Saturday, September 14, 10am-12pm

If it's metal and can hold an edge it can likely be sharpened. Join PHA Horticulturist **Oliver Osnoss** to see how Polly Hill Arboretum maintains its tools and learn how to keep your tools sharp and performing their best. This hands-on class will show you how to sharpen pruners, cultivators, mower-blades, and more. Bring in a tool you would like to sharpen, and leave with the know-how to keep your landscape tools in tip-top shape so they last and perform their best. *\$35 (\$20 for PHA members). Space is limited. Please pre-register.*

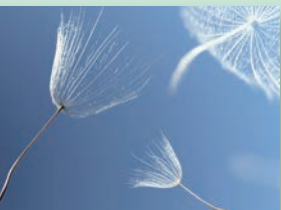


Native Seeds: Science, Collection and Cultivation

Saturday, October 19, Time TBA

Seeds are a remarkable product of evolution; they provide a means for plants to travel great distances and cope with extreme climates. Seeds play a critical role in most food webs, and human

existence relies upon them. This workshop with PHA Curator **Todd Rounsaville** will provide an overview of seeds including their evolution, functional diversity, and types of dormancy. We will cover how these traits lend themselves to cultivation. Fall is a perfect time to study seeds, and the workshop will include a guided tour of the grounds to collect seed, and hands-on instruction for cleaning and storing seeds in order to break dormancy. Participants will leave with seeds from many unique plants, with a focus on native wildflowers and trees. *\$40 (\$25 for PHA members). Space is limited. Please pre-register.*



Family Book Series



PHA Youth Education Coordinator Kendra Buresch leads nature storytime

Tuesdays at 10:30am, July 9 through August 20

Relax under the shade of a tree and enjoy summer with your family while listening to a nature-based children's book read by one of our volunteers. A simple walk or activity related to the book will follow. Books will be selected for children 3 to 8 years old, although all ages are welcome! Rain location is the Far Barn. Want to extend your Arboretum adventure? Pack a picnic lunch to enjoy in the picnic grove near the Visitor Center. *Free.*

Special Events

"Art in the Arboretum" Exhibit Opening

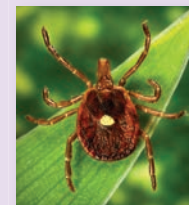
Tuesday, June 25, 5:30-7:30

Join us for an opening reception in honor of our 2nd annual visitor art show, "Art in the Arboretum." This exhibit will showcase unique perspectives on PHA's plants and landscapes featuring works by 13 featured artists and photographers. Enjoy a tour of the Arboretum through the eyes of the artists. Staff and artists will discuss the significance of the pieces' subjects to the Arboretum's collections and history. *Free.*

Deer, Ticks and Tick-borne Illnesses on Martha's Vineyard

Wednesday, August 7, 5:30pm

Richard Johnson, Director of the Martha's Vineyard Tick Program will present the latest data on deer and ticks on the Vineyard. The presentation will start with a review of the three common ticks on the Island and their ecology, life cycles and the diseases that they carry. Then we will briefly review the role of the white tailed deer on the Island's tick population. Next we will discuss personal protection and how to make your yard safer. Finally, Dick will present the latest information on the spread of the lone star tick and efforts to reduce the deer population on Martha's Vineyard. *Free.*



Lone star tick

Fall Plant Sale

Saturday, September 7, 9:30am-3pm

Late summer and early fall is a perfect time to plant. Join us for our end-of-the-season plant sale; Arboretum staff will be on hand to answer questions and offer advice on our selection of choice trees, shrubs, perennials, and Island natives. At 1pm, **Andy Brand**, Curator of Living Collections at Coastal Maine Botanical Garden will present a lecture titled "Homeland Diversity: Inviting Mother Nature Back Into Our Yards. For more details on the lecture, please see the "Lecture Series" section at the beginning of this brochure. *Free.*



Tours

The following are in addition to our regular tours, which take place Thursday through Saturday at 10am during July and August.

"Looking Together" Tours

Tours run the 2nd and 4th Tuesday of each month, 2-3pm, May through September

Learn more about the Arboretum and its plant collections on guided walks led by knowledgeable staff and docents. These specialized tours are designed to offer an in-depth Arboretum experience. The theme will change between tours. Meet at the Visitor Center. *Free with \$5 admission. Free admission for PHA members.*



Edgartown Tree Tour

Wednesday, August 21, 6-8pm. Sponsored by Donaroma's Nursery and Landscape Services

Join PHA Grounds Manager/Arborist **Ian Jochems** for an informative and fun evening walking tour of the many glorious mature trees of Edgartown. Among the hydrangeas and picket fences, many unique and fine specimen trees await discovery. As one past participant noted, "I will forever after see the town's trees with new eyes and greater appreciation." *\$20 (\$15 for PHA members). Pre-register.*



Grounds Volunteer Open Days

The first Thursday of each month, 9am-12pm, May through October

Curious about becoming a PHA grounds volunteer? You'll work with Arboretum staff and other volunteers on activities that may include planting, pruning, weeding, and mulching. It's an easy-going, fun environment and staff is always available to answer questions. We provide tools, but please bring gloves and wear outdoor work attire. Contact volunteer coordinator Kendra Buresch for more details or for general volunteer information: kendra@pollyhillarboretum.org.



Exhibits

Visit anytime the PHA grounds are open: daily, sunrise to sunset

Art in the Arboretum

Opens June 25. Opening reception & tour: Tuesday, June 25, 5:30pm

This summer, in celebration of PHA's 20th anniversary, we are hosting an outdoor art exhibit featuring works inspired by sights and scenes at the Arboretum. This exhibit will showcase unique perspectives on the Arboretum's plants and landscapes featuring the artwork of **Mary Alden, Leonard Hall, Lynn Hoeft, Laurie Howick, Peter Jochems, Dale Julier, Nancy Kingsley, Kathy Kinsman, Melisande Knowles, Kasha Ritter, Carmen Torres Rodriguez, Beth Smith, and Katy Upson**. The pieces were selected to represent different seasons, different plants, and varied styles and perspectives. Weatherproof copies of the original art will be displayed on the grounds where the piece was created. *Free.*

Dinosaur Plants

A returning self-guided, family-friendly exhibit opening this fall at the Arboretum: a special map will guide visitors to plants with origins in the Triassic, Jurassic, or Cretaceous periods within the Mesozoic Era. While dinosaurs went extinct, plants persisted. Check out ferns, the dawn redwood, monkey puzzle trees, ginkgo, and magnolia, which were all around at the time of the dinosaurs. Some plants have evolved, while others remain much the same as they were when dinosaurs munched on their leaves. Fossils, a timeline, and other interesting facts will be available at the PHA Visitor Center. *Free.*

Left: "West Field with Flowering Ash," 2010, by Leslie Gray, from the 2018 Art in the Arboretum exhibit.

